

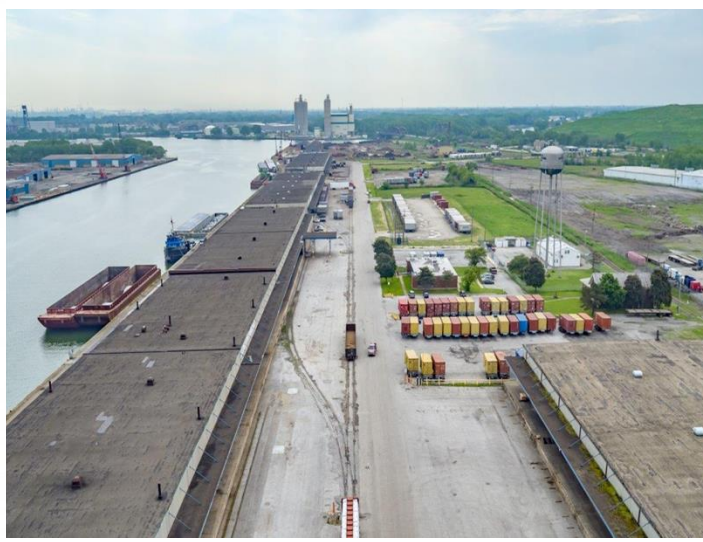


Illinois International Port District

Transportation | Innovation | Community

Illinois' International Economic Development Gem
Located In Chicago's Southeast Side.





Port Overview

- ★ Established by General Assembly in 1951
- ★ 9 Members of the Board of Directors
 - ★ (Appointed - 5 Mayor and 4 Governor)
- ★ Critical link in the global supply chain
- ★ Three Land Areas – over 2,000 acres
 - ★ Iroquois Landing
 - Connector to St. Lawrence Seaway and Great Lakes
 - Chicago Police Heliport
 - ★ Lake Calumet
 - River terminal connects to the Mississippi River down to Gulf
 - ★ Harborside International Golf
 - 52,000 rounds of golf annually
 - 100+ annual events
- ★ Responsible for management of FTZ 22
- ★ Strategically positioned for growth



Multimodal Connections

HIGHWAY

Several interstates, state routes, and US highways traverse the port district, these include I-55, I-57, I-90, I-94, I-290, IL 1, IL 19, IL 50, IL 64, US 12, and US 41. Included within these routes are a total of 20.8 Critical Urban Freight Corridor miles within the port district.

RAIL

Six class I railroads provide service within the port district, these include Burlington Northern Santa Fe (BNSF), Union Pacific (UP), Canadian National (CN), Norfolk Sothern (NS), CSX Transportation (CSXT), and Canadian Pacific (CP).

WATER

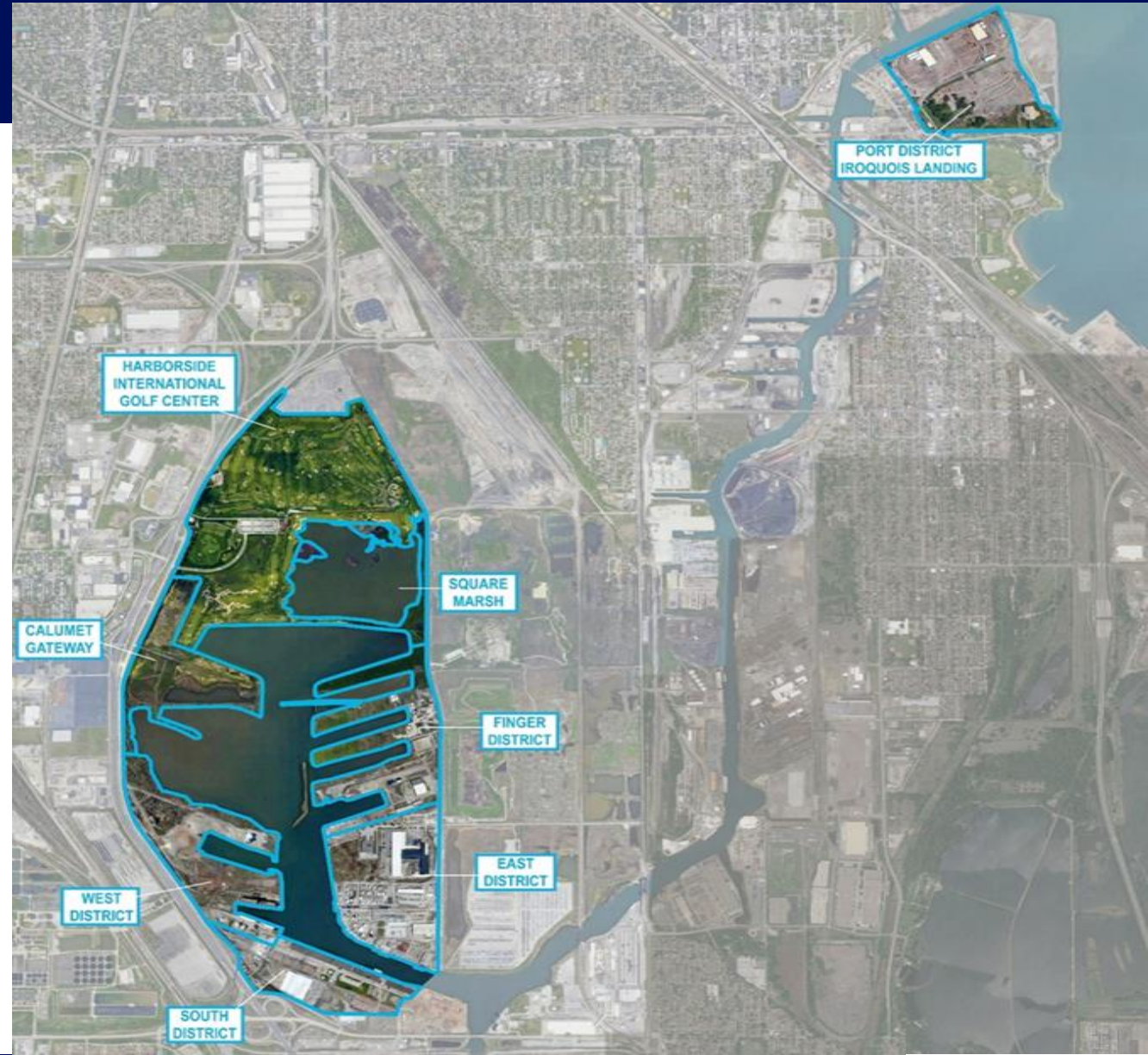
The Port District has 28 miles of coastline along Lake Michigan, the lake is part of Marine Highway 90. Additionally the following navigable waterways flow through the port district the Chicago Sanitary & Ship Canal and the Chicago River 10 miles, the Chicago River North Branch 6.5 miles, and the Calumet River and Channel 13.5 miles. These waterways are part of Marine Highway 55.*

AIR

- Chicago O'Hare International - ORD (Chicago, IL)
- Chicago Midway International Airport - MDW (Chicago, IL)

LOCKS and D

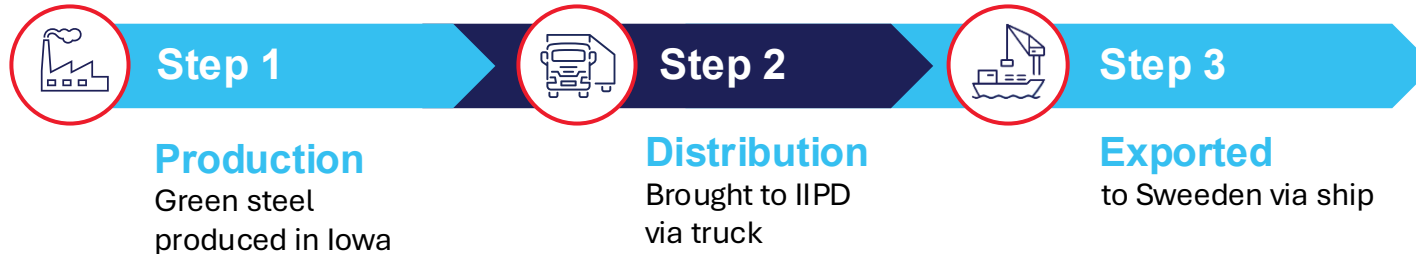
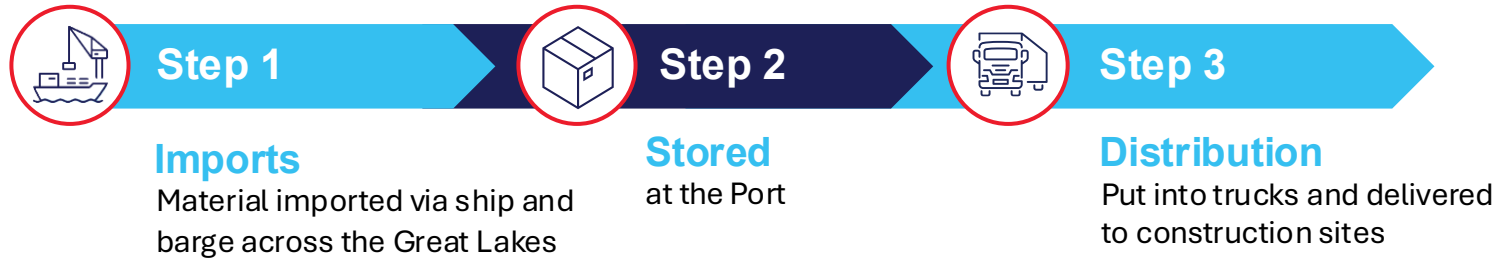
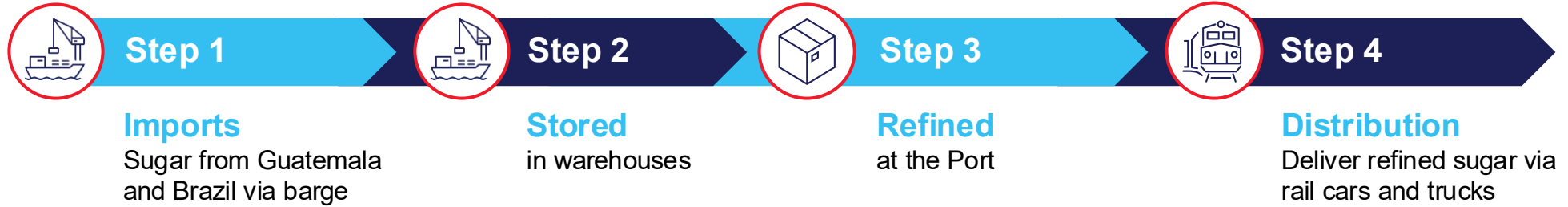
- Chicago Harbor Lock



OUR CONNECTIVITY MAKES US GREAT



IIPD Connecting the Global Supply Chain by Water, Rail & Road

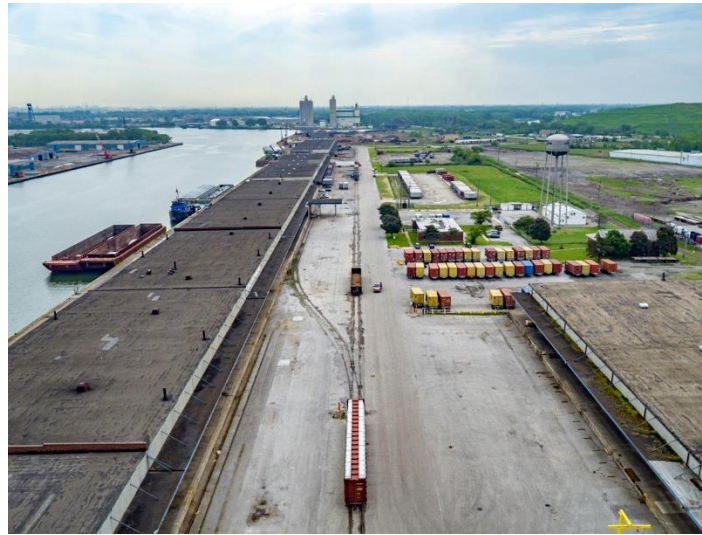
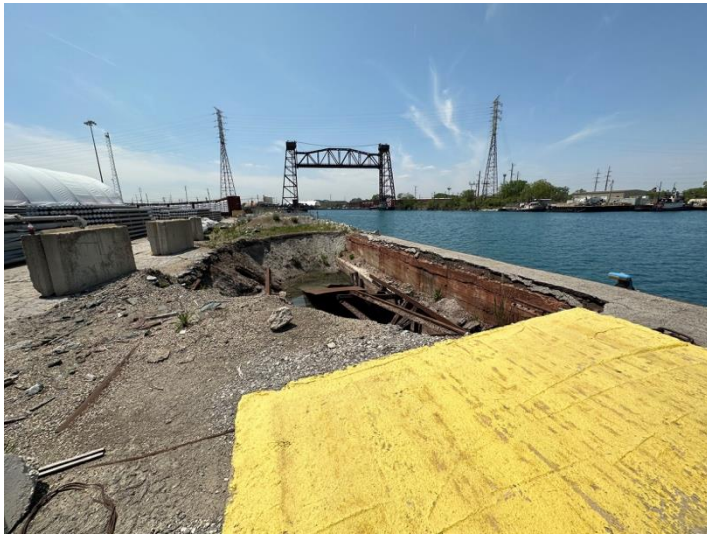


Improvements Underway

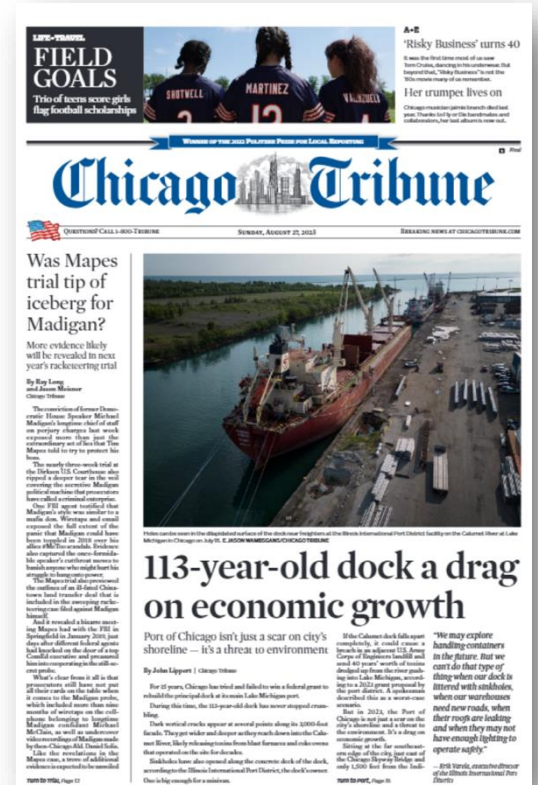
★ Over \$150 million in grant funds supporting:

- ★ Construction of Iroquois Landing Dock Wall (PIDP)
- ★ Reconstruction of Butler Drive (State, City, County)
- ★ Warehouse improvements including new lighting and roofing (State)

★ Installation of solar panels, battery storage and purchase of heavy duty electronic equipment (USEPA)



Existing Conditions



Thank You!



Erik Varela
Executive Director
erikv@iipd.com
773-504-6844